

# HAG Ltd. - The Door Specialists



1 Oak Lane, Fishponds, Bristol, United Kingdom, BS5 7UY  
[www.hag.co.uk](http://www.hag.co.uk)  
Rebecca Yearsley, Tel: +44 (0) 117 981 4102, [becky@hag.co.uk](mailto:becky@hag.co.uk)

---

## CPD Overview

---

HAG specialises in delivering comprehensive property protection solutions, focusing on Security, Fire, Automatic, and Environmental doors. Since our establishment in 1983, we remain committed to our core values of Quality, Reliability, and Integrity.

We are a certified FIRAS Installer.

Our diverse product range positions us uniquely to provide customised security solutions for domestic, commercial, and industrial premises. Specialising in industrial doors, steel doors, fire and smoke protection products, roller shutters, high-speed, thermal and acoustic doors, security grilles and gates, loading bay dock levellers, automatic doors, commercial doors, and garage doors, we cater to a wide spectrum of needs.

HAG proudly serves as the preferred supplier for various UK emergency services, including the Fire Service, NHS, Police, and Coast Guard. With extensive experience collaborating with major construction companies and award-winning architects, we have contributed to numerous high-profile projects across the UK, detailed in our Case Study section.

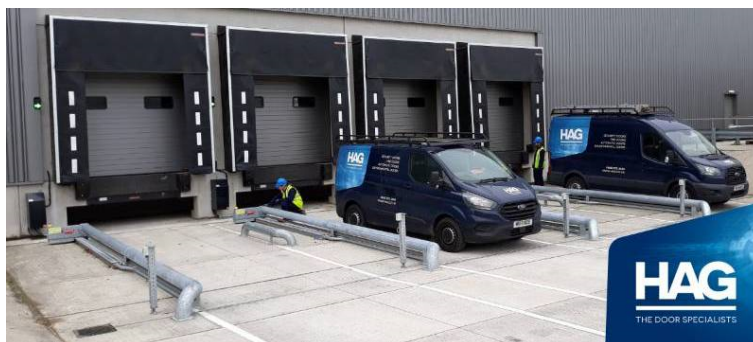
In addition to our UK presence, we have a global reach, supplying and shipping products worldwide, with destinations including St Lucia, Bahrain, St Helena, Nigeria, and more.

Our fire protection products undergo independent testing by the third-party entity Warrington Fire, and we hold the highly coveted FIRAS certification for Fire Roller Shutters and the installation of Fire Protection products.

HAG is a proud RIBA CPD Approved provider, featured on NBS Source and Chorus, and boasts the widest range of BIM objects in the UK.

For further insights into our activities, you can find us predominantly on LinkedIn. Follow us for company and industry news, case studies, and more.

Details of our Employers Liability Insurance, along with certificates confirming various memberships and accreditations, can be accessed under Literature.



---

## Available CPD Material (4)

---



### A Complete Guide to High Speed Doors

This on-demand CPD video provides a comprehensive overview of High-Speed Doors, offering you a Complete Guide.

Discover how these products play a crucial role in addressing environmental control requirements, productivity, cost savings, durability & safety, and fulfilling regulatory and legislative obligations. Explore the 2 main types of high-speed doors. A vertically rolling high speed door & a vertically lifting high speed door.

Vertical rolling high speed doors are designed to be used intensively and predominantly indoors. The curtain is lightweight and flexible, leading to increased efficiency and reduced energy consumption due to better control of air flow.

Vertical lifting high speed doors are ideal for use as external barriers due to their flexibility. They are designed to be used in medium to large openings, where the wind load is quite heavy. They may also be used in instances where there are two sections within a building experiencing significant variations in air pressure or temperature.

By the end of this CPD delegates ought to know:

1. What High Speed Door products are available & how this will help you with specifying the correct product for your thermal & environmental needs.
2. The technical difference between the products, as well as bespoke specifications, aesthetics, accessibility, sustainability & energy performance.
3. The ways in which you can use these products to meet your regulatory & legislative requirements.
4. The process of how to specify the right product for the right application, inappropriate applications and discuss essential long-term maintenance.

Material type: Online Learning, Seminar

RIBA Core Curriculum: **Design, construction and technology**

Knowledge level: General Awareness

---



### A Complete Guide to Industrial Doors

This on-demand CPD video provides a comprehensive overview of Industrial Doors, offering you a Complete Guide.

Discover how these products play a crucial role in addressing security and thermal requirements, and fulfilling regulatory and legislative obligations.

Explore specialised options, including Insurance Certified LPS1175 rollers shutters, and enhanced acoustic and thermal criteria.

Upon completion of this CPD, you'll possess in-depth knowledge about technical specifications and bespoke choices, seamlessly integrating considerations for sustainability and an inclusive environment.

This detailed yet concise CPD will enable you to make knowledgeable & confident specifications in the future.

By the end of this CPD, delegates should know:

1. What Industrial Door products are available & how this will help you with specifying the correct product for your security, acoustic, thermal & environmental needs.
2. The technical difference between the products, as well as bespoke specifications, aesthetics, accessibility, sustainability & energy performance.
3. The ways in which you can use these products to meet your regulatory & legislative requirements.
4. The process of how to specify the right product for the right application, inappropriate applications and discuss essential long term maintenance.

Material type: Online Learning, Seminar

RIBA Core Curriculum: **Design, construction and technology**

Knowledge level: General Awareness

---



### A Complete Guide to Steel Doors

This on-demand CPD video will give you A Complete Guide to Steel Doors, how these products will help you to meet regulatory & legislative obligations, security & fire protection requirements, as well as more specialist options such as insurance certified, blast resistance, acoustic & thermal needs. After completing this CPD, you will have an indepth knowledge of technical specifications, bespoke options, whilst also factoring in how this can work seamlessly alongside your sustainability & inclusive environment criteria. This detailed yet concise CPD will enable you to make knowledgeable & confident specifications.

After completing this CPD seminar, delegates ought to know:

- What Steel Door Products are available & how this will help you with specifying the correct product for your security, fire protection, acoustic, thermal & environmental needs.
- How these products are used to prevent significant fire & smoke damage, secure buildings against a variety attacks, how bespoke products can meet thermal, environmental, acoustic & blast resistant needs.
- The ways in which you can use these products to meet these regulatory & legislative requirements.
- The technical difference between the products, as well as bespoke specifications, aesthetics, accessibility, sustainability & energy performance.
- The process of how to specify the right product for the right application, inappropriate applications and discuss essential long term maintenance.

Material type:	Online Learning, Seminar
RIBA Core Curriculum:	<b>Legal, regulatory and statutory compliance</b>
Knowledge level:	General Awareness

---



### Fire Protection with Fire Shutters, Fire Curtains & Fire Resisting Steel Doors

Online Learning, by HAG Ltd. - The Door Specialists

The purpose of this video is to educate you further & build upon your existing knowledge on the topic of fire shutters, fire curtains and fire resisting steel doors, so you will be confident in applying this up-to-date information into your daily work in specifying fire protection products. We will cover: what solutions you can use to manage fire & smoke risk. What solutions you can use to protect buildings from significant fire & smoke damage and save lives. Talk about up to date regulations and legislation around fire protection. How various products can help you to meet your legal requirements. The technical differences between products, as well as bespoke specifications & aesthetics. Discuss accessibility, sustainability and energy performance and finally advise you on inappropriate applications & long term maintenance.

Material type:	Online Learning, Seminar
RIBA Core Curriculum:	<b>Legal, regulatory and statutory compliance</b>
Knowledge level:	General Awareness

---

---

## Classifications

---

### Subject/Product Areas (CI/SfB)

Structure

Doors: industrial > Industrial doors

Doors: parts, accessories > Door security

Room dividers, internal grilles etc. > Grilles and shutters

### RIBA Core Curriculum areas

Design, construction and technology

Knowledge level: *General Awareness*

Legal, regulatory and statutory compliance

Knowledge level: *General Awareness*